






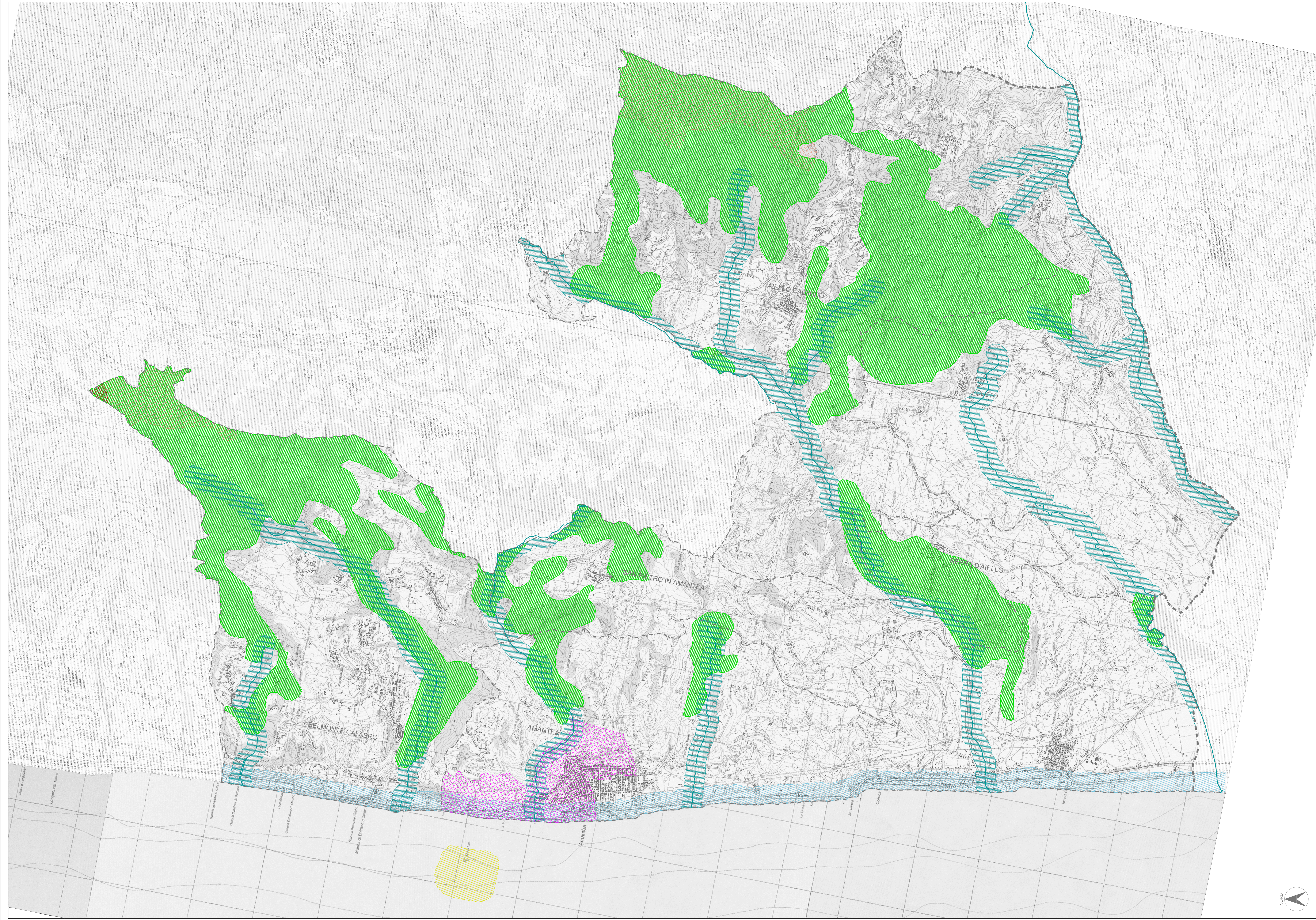


LEGENDA

AREE TUTELATE PER LEGGE
(art. 142 D.Lgs 42/2004 - art. 6 L.R. 23/90)

-  Aree di notevole interesse pubblico vincolate ai sensi della L. 1497
-  Aree SIC
-  Territori coperti da boschi
-  Fasce di rispetto dei corsi d'acqua
-  Territori Costieri
-  Territori montani sopra i 1.000 m
-  Territori montani sopra i 1.200 m



**Piano Strutturale Comunale Associato
(PSA)**

dei comuni di

**Amantea, Belmonte Calabro, Aiello Calabro
Cleto, Serra D'Aiello, San Pietro in Amantea**

DOCUMENTO PRELIMINARE

A - QUADRO CONOSCITIVO

A4 - Carta dei beni ambientali e paesaggistici vincolati

scala 1:25.000

Prof. Arch. Pier Luigi Carci, Capogruppo
Dott. Geol. Domenico Belcastro
Arch. Aristodemo Caglioti
Ing. Giselda Iacoe
Dott.Agr. Lorena Schibuola
Ing. Massimiliano Serent Tha
Arch. Alessandro Wallach

APRILE 2011